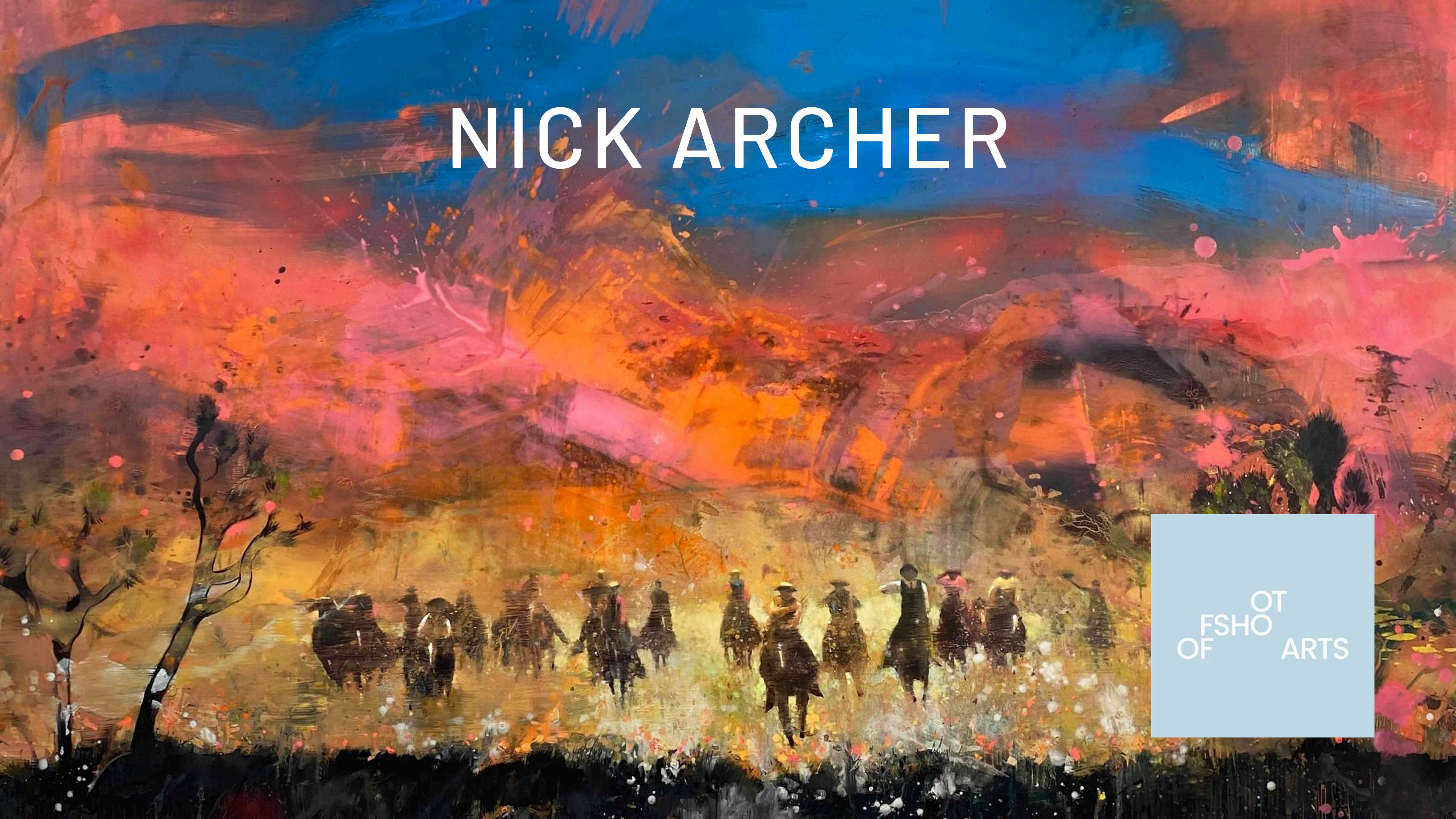


# NICK ARCHER



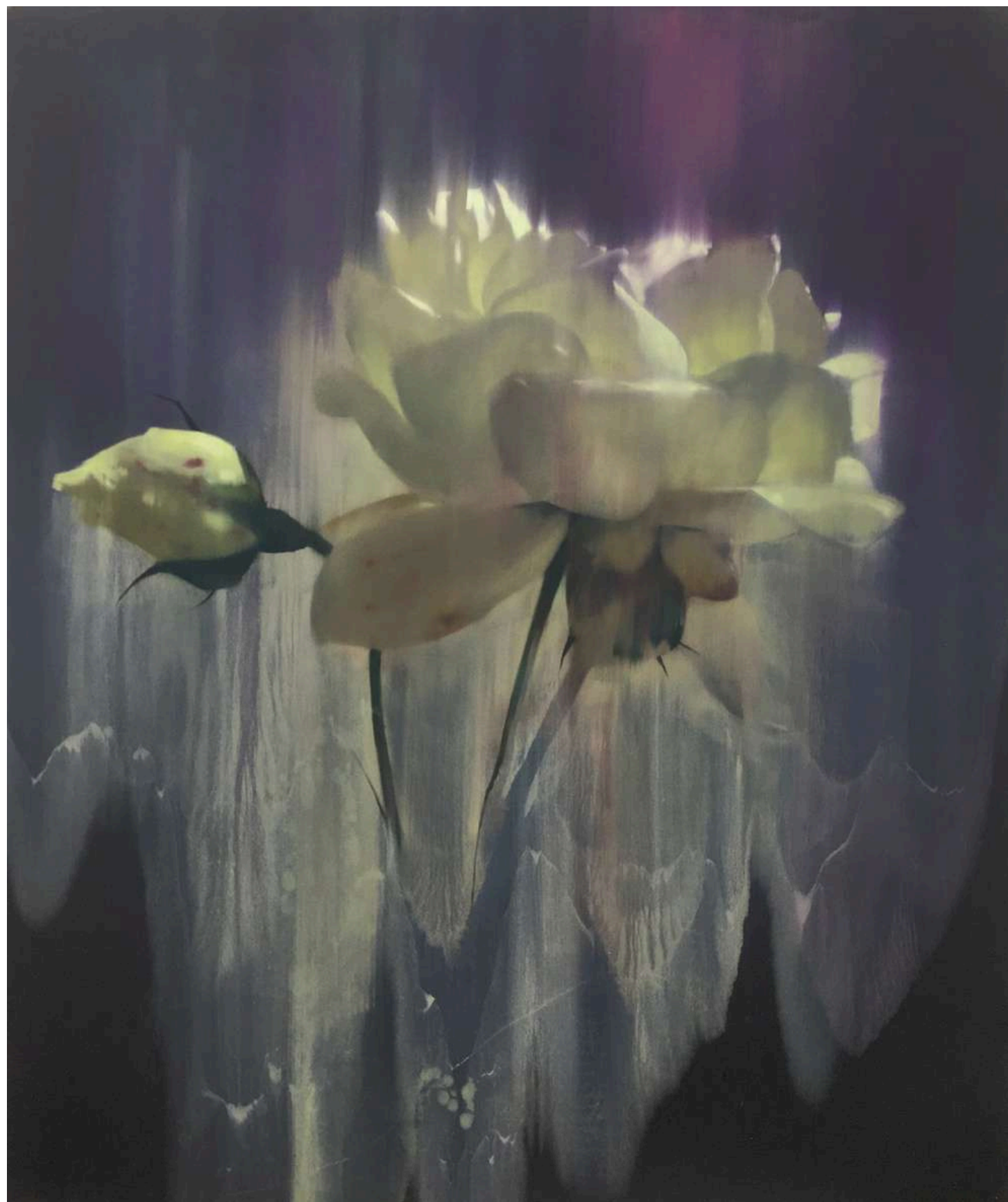
OF FSHO OF OT ARTS



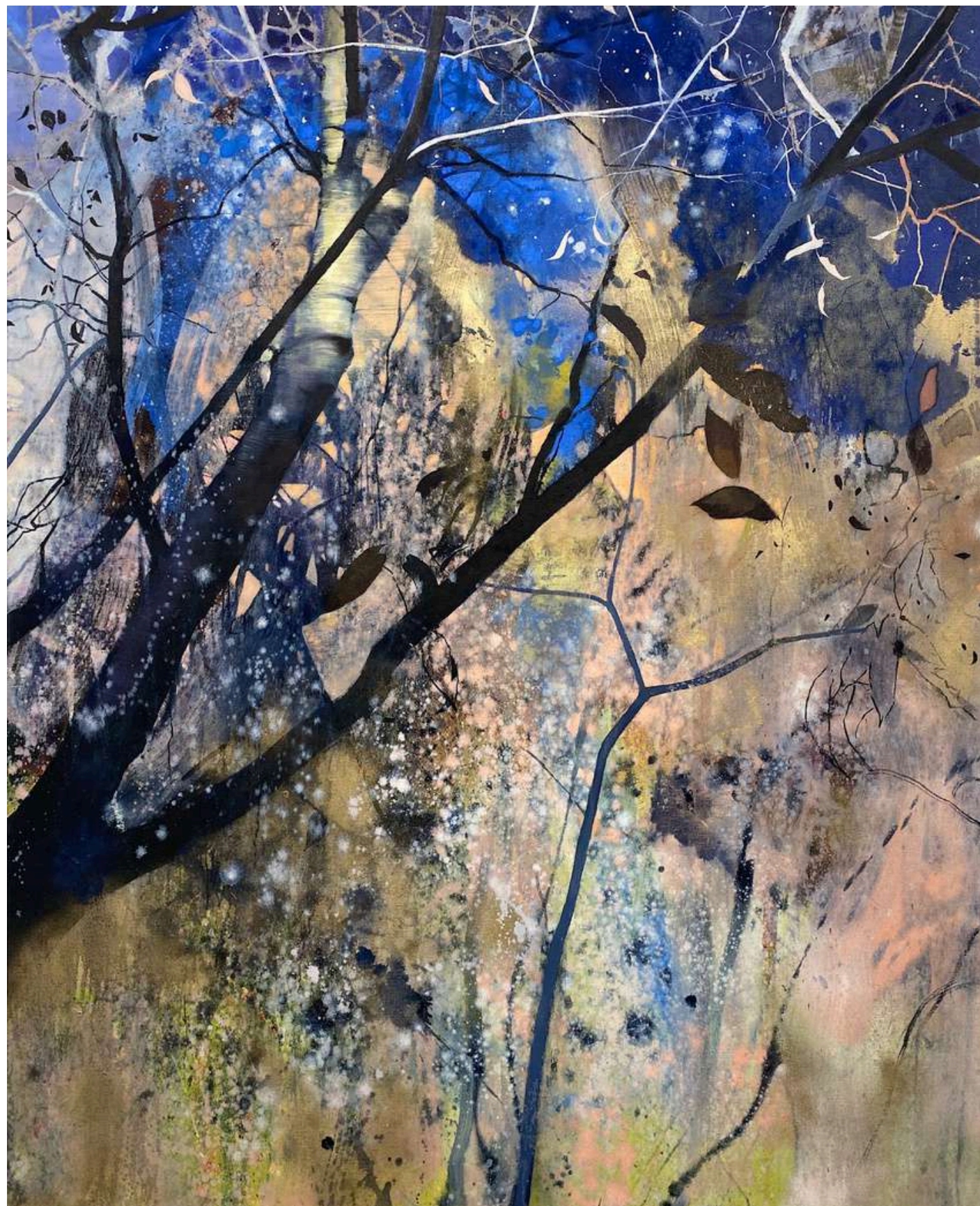
Boatmen  
Oil and spray paint on linen  
160 x 130 cm  
£10,800



What The Snow Brings  
Oil on canvas  
150 x 180 cm  
£11,900



Untitled No.2  
Oil on canvas  
140 x 120 cm  
£7500



Towards The Sky  
Oil and spray paint on canvas  
160 x 130 cm  
£10,800



Race For The Shadows  
Oil on canvas  
200 x 230 cm,  
£16,000

# NICK ARCHER

Within Archer's canvases, layers of paint coalesce into dense, enigmatic vistas, each a labyrinthine journey through colour and detail. This is the realm where the 'dark side of Walt Disney meets northern landscape,' a beguiling juxtaposition that beckons us with childish wonder and evokes the spectres of bygone memories. These otherworldly landscapes, seemingly lost or imperilled, materialize as phantoms in the annals of our collective imagination.

At times, figures—children, in particular—emerge as protagonists, their eyes our own as we venture through these strange and disquieting landscapes. In works such as 'Ghosts,' the artist invites us to seek utopian enclaves that once thrived, now mere echoes of our rural heritage. The trees and woodlands, integral facets of Britain's landscape, now stand as ghostly apparitions, bearing witness to the passage of time and the fragility of cultural memory.

Nick Archer (born 1963) lives and works in East Sussex, England. He trained at the Royal Academy Schools in London (1996-1999), he won several awards, including 1st at the 'Hunting Art Prize', commendation at the 'BP Portrait Award' and the Figure Painting Award at the 'Discerning Eye'. Nick has exhibited extensively in the UK and Europe since 1999, including solo exhibitions with Louise Alexander Gallery (Porto Cervo, Italy), Sarah Myerscough Fine Art (London), Long and Ryle (London), Galerie Hug (Paris) and a solo show at Gowen Contemporary (Geneva) in 2014 and 2017. He has featured in museum exhibitions including the National Portrait Gallery (London), the Wandsworth Museum (London). In 201. He had a solo exhibition at the Maison de la Culture (Metz, France) and had a solo show at the Hastings Museum (East Sussex).

Nick Archer's work is held in private, corporate and public collections around the world including the future satellite of the Hermitage Museum (Moscow).

Photo copyright: Tom Connolly



Offshoot Arts is an art consultancy and curatorial service based in the UK. We connect our extensive network of global artists and galleries with forward-thinking clients, curating engaging art strategies via exhibitions, and building lasting art collections through acquisitions. We curate exhibitions that enhance the environment and communicate values and identity. Supporting the arts positions our clients as progressive and cultured. It cultivates opportunities for engagement, education, productivity and wellbeing. We are committed to discovering and nurturing artistic talent to promote its positive value and impact. We connect with audiences, champion artists and galleries, and create vibrant, accessible creative experiences that challenge and inspire.

Founder and director Melissa Digby-Bell has a BA Hons degree in the History of Art from The University of Bristol. Since 2002 she has worked in the contemporary art sector, managing high-profile artist studios (Anish Kapoor and Marc Quinn), working in commercial galleries (White Cube, The Gallery of Everything, Saatchi Gallery) and national and international art fairs (Frieze Masters, London Art Fair, 1:54 Contemporary African Art Fair, India Art Fair, Art Stage Singapore, Scope NY & Basel, Context Art Miami). In 2020 Melissa formed Offshoot Arts.

## CONTACT INFORMATION

**MELISSA DIGBY-BELL**

melissa@offshootarts.com

+44(0)7515 123 453

**WWW.OFFSHOOTARTS.COM**

 offshoot\_arts

**OF FSHOOT ARTS**